



Support · Achieve · Progress

Est. 1990

Leicestershire Leicester and Rutland

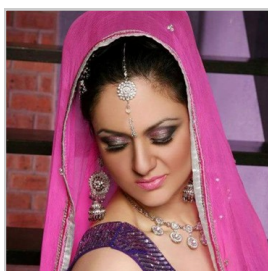
Headway Monthly Bulletin

Issue 88

May 2017

Leicestershire Leicester and Rutland Headway
Providing support for people with brain injuries

Headway Leicester
Welcomes Tindy



We are proud and delighted to announce the appointment of **Tindy C Chaggar** as our **Brand Ambassador**. Tindy recovered from catastrophic injuries and is now a radio presenter, compere, voice over artist, model and actress. Her remarkable recovery, supported by Headway Leicester, is a testament to what can be achieved in the face of terrible adversity and life changing brain injury.



JustTextGiving™
by **vodafone**

LONDON TO PARIS TOUR DE FRANCE BIKE RIDE!



[http://
uk.virginmoneygiving.com/
team/TeamWestleigh](http://uk.virginmoneygiving.com/team/TeamWestleigh)

Team Westleigh are fundraising for Headway Leicester. They are taking part in a London to Paris Bike Ride event between 19 and 23 July 2017.

You can show your support on their Virgin Money Giving page:



ARE YOU A RUNNER...

Or might you be one for a day?

The **Leicester Marathon and Half Marathon** takes place on **15 October 2017**. Runners can run for charity and Headway Leicester has three free spaces for participants willing to make Headway the beneficiary of their sponsorship.

Moreover, Headway will itself actively seek sponsors for runners to bolster your own efforts.

To apply for a space please contact Mary Goulty at Headway Leicester on 0116 2739763.



FUNDING NEWS

We wish to say a big thank you to the following for their recent fundraising for the Charity.

Nikki Parmar
(£887.77)

KH Hair
(£1,615.10)

Leicestershire and Rutland Freemasons
(£500)

Hats for Headway donations
(£208.54)

Please see Headway's Just Giving Page for more fundraising updates and information.



Donating to Headway Leicester through JustGiving is simple, fast and totally secure.

Your details are safe with JustGiving; they'll never sell them on or send unwanted emails.



You can now also donate quickly, safely and easily: just text LLRH01 £2, £5 or £10 to 70070

For more information, please contact:
Headway Leicester
4 Hospital Close
Leicester, LE5 4WP

Headway Leicester is supported by:



Samworth Brothers

QUALITY FOODS



Support · Achieve · Progress
Leicestershire Leicester and Rutland

© 2017 LEICESTERSHIRE
LEICESTER AND RUTLAND
HEADWAY

4 HOSPITAL CLOSE
LEICESTER LE5 4WP
Tel 0116 2739763
Fax 0116 2733212
Email
headway@headwayleicester.org.uk
Website
www.headwayleicester.org.uk

A Company Limited by
Guarantee No 03672087 and a
Registered Charity No 1074011

Home to Roost

Our Italian woodworker extraordinaire Nino has surpassed himself again by producing the most elaborate bird house ever!

Near to completion the house, in typical Nino style, got his creative juices flowing and a felt/shingle roof was added, which Nino cut by hand using his own template.

Once the roof was completed the house was painted but that wasn't enough. Nino came up with the idea of adding tiny

windows including window sills. After adding the sills he painted them with wood stain to give them a wood painted look. I'm surprised he didn't add curtains!

As soon as Mary saw the bird house she asked if it could be a raffle prize at our recent charity curry night. The bird house subsequently generated lots of interest in the raffle and two



commissions were placed. That will keep Nino busy for a while! I can't wait to see how they turn out!

Well done Nino; carry on the good work.

Please also let us know if you would like our woodwork team to build one for you too!



The Law Society

Do you need help after an accident?



The Law Society

Affinity Law Ltd
100 New Walk
Leicester LE1 7EA
Tel 0116 2627292
Fax 0116 2552914
Contact: Elena Lazutina
elena@affinitylaw.co.uk
Contact: Nicola Kitchener
nicola@affinitylaw.co.uk
[Link to website](#)

Bray & Bray
Solicitors
Spa Place
36-42 Humberstone Road
Leicester LE5 0AE
Tel 0116 2548871
Fax 0870 3835023
[Link to website](#)

Freeth Cartwright
Solicitors
Imperial House
108-110 New Walk
Leicester LE1 7EA
Tel 0116 2014000
Fax 0116 2014002
Contact Jane T Williams
[Link to website](#)

LIME—
The Personal Injury Company
1 Meridian South
Meridian Business Park
Leicester
LE19 1WY
Contact Robert Rose
Tel 0845 630 8850 ext 4406
Mobile 07834 129694
Email robert.rose@limepersonalinjury.co.uk
Website
www.limepersonalinjury.co.uk
[Link to website](#)

Nelsons Solicitors
Solicitors
Provincial House
37 New Walk
Leicester LE1 6TU
Tel 0116 2226666
Fax 0116 2337822
[Link to website](#)

Osborne Morris & Morgan
Solicitors & Neurolawyers
Danbury House
West Street
Leighton Buzzard
Bedfordshire LU7 7DD
Tel 01525 378177
Fax 01525 851006
Contact Tim Woolford
[Link to website](#)

Shoosmiths
Solicitors
The Lakes
Northampton NN4 7SH
Tel 03700 863195
Fax 03700 863460
Contact Chris McKinney
[Link to website](#)

Spearing Waite LLP
34 Pocklington Walk
Leicester, LE1 6BU
Tel: 0116 2421213
Fax: 0116 2512009
Mobile: 07739 507534
Email:
greg.bee@spearingwaite.com
[Link to website](#)

(Please note that Leicestershire Leicester and Rutland Headway does not recommend any particular solicitor.)