

Headway Monthly Bulletin



Issue 9

February 2010

Leicestershire Leicester and Rutland Headway
Providing support for people with brain injuries

Introducing our new Assistant Day Centre Managers

By Lisa Douthwaite and Chris Gale

A Tasty Day Out



And the award for the biggest smile goes to...

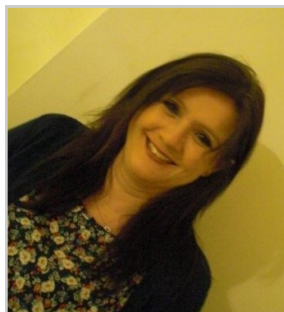
I went to a Chinese restaurant with other members from Headway. I had a really good time and I got to meet other people and got to go out for the first time in so many years on my own without my family and without worrying that I was going to fall because Madhu was with me. Madhu really looked after me, so a very big thanks to Madhu.

It was a really big experience, learning what Chinese people eat and me being a Muslim, eating halal food, I had to eat the vegetarian food instead.

Fatima Namaji

We recently welcomed two new members of staff to Headway House, Lisa Douthwaite and Chris Gale. Both will be part time Assistant Day Centre Managers with Lisa also being Volunteer Co-ordinator and Chris being responsible for Education taking over from Sue Hannam.

Lisa has spent time



Lisa *"The floor's a bit uneven"*

being a Family Support Worker, teaching and nursing with a career in learning disabilities that spans 25 years. She is very much looking forward to joining the team and working at Headway. *"I was thrilled to get the job with Headway, it's such a lovely, friendly place to be and shall enjoy working with a new and different group of people."*

Chris has recently moved up from West Sussex to be near her children and grandchildren. She has worked with Social Services as an Occupational Therapist Assistant, taught



Chris, *getting to grips with things*

English in the basic skills department of a college and worked in a disabled living centre. She likes singing, dancing and amateur dramatics. *"I am looking forward to getting to know the members and becoming one of the team of staff and volunteers who make the Day Centre such a success."*

PC Rob Ellis returns ...

PC Rob Ellis was on student Police Placement from De Montfort University Leicester in 2008. He volunteered at Headway House one day a week for 10 weeks. He visited Headway House last month in his police car and full uniform, hoping to meet members who he had previously got to know, only to be welcomed by new faces! This is a success story in itself; as our vision is to help members to realise their potential whilst adjusting

to their changed lives. By encouraging our members to recognise and focus on their achievements, and with the aim of identifying future goals and aspirations, such as returning to employment, finding voluntary work or attending college.

It was great to see PC Rob Ellis and wish him success in his career and take this opportunity to welcome our new PC volunteer, Lisa Warren, who joins us this month.



'Rob'-o-cop!

Happy Birthday Headway!



This year is the 20th anniversary of the opening of Headway House. It actually opened in September 1990, but we want to spend the whole year celebrating! We are creating a 'shopping list' of 20 items from £20 to £20,000 to raise money for, so please let our Fundraiser, Alison Leight, know if you have any ideas for things we need. Also, if you've got any ideas for special slogans to help promote our birthday, ideas for events, or people and businesses that may want to support us — all your ideas are most welcome!

© 2010 LEICESTERSHIRE
LEICESTER AND RUTLAND
HEADWAY
4 HOSPITAL CLOSE
LEICESTER LE5 4WP
Tel 0116 2739763
Fax 0116 2733212
Email
headway@headwayleicester.org.uk
Website
www.headwayleicester.org.uk

A Company Limited by
Guarantee No 03672087 and a
Registered Charity No 1074011

Lunchtime Treat

By Marietta Sharp

Wendy Whait, Gill Sharp, Christine Wallis and Ros Sylt from Inner Wheel, Ladies Rotary group from Melton provided a soup, bread and cake lunch for all the members, volunteers and staff at Headway House on a very cold and snowy Monday 11th Jan 2010. They like to offer service to a group as close as possible to the International Inner Wheel

Day which is on January 10th each year. They enjoyed coming to Headway and found the new kitchen good to work in. They had a big fright when the microwave "talked" to them! (We have a talking microwave for people with visual difficulties!) The Melton Inner Wheel group meet



once a month and either have a visiting speaker or provide a "service" to different charities or local groups.

Boxing Clever

In May 2008 box maker Murray Marks came to Headway House to show us how to make bent wooden boxes. Lee Chadd helped him with making the first one, and he has since made his own set. We asked Gary Slater to find out from Lee how it's all done:

Gary: *Why did you do them?*

Lee: *I liked the look of them and they're all different colours. A man came here and showed us lots of them.*

Gary: *You made your boxes after he showed how to make them. How many have you made?*

Lee: *I think six*



Lee and Gary ... is there another box hiding?

Gary: *Where are they?*

Lee: *You wouldn't know. They're hiding.*

Gary: *Inside the biggest one, like Russian dolls, they are a set of sizes. How did you bend them?*

Lee: *I made the wood hot and bent it round a circular shape.*

Gary: *Are they difficult to make?*

Lee: *Yes, you have to make the box and the lid at the same time.*

Gary: *Do you think you could show someone how to make them?*

Lee: *No, but I could help.*

Gary: *What was the hardest thing?*

Lee: *The first one was the hardest.*

Gary: *Are you proud of them?*

Lee: *Yes!*

Fundraising News

By Alison Leight

You may have noticed lots of different visitors to Headway House this month, sorry if we didn't get to introduce them all, but you will get to meet some of them very soon. We had the Market Harborough Lion's Club, who want to do some fundraising for us. They came to see what we do, and the kind of things the money would be spent on. They asked us to provide them with a 'shopping list' of things we would like, so Mary and I are compiling that right now! There was a lady from Beaverbrook's the Jewellers, Jenny, who wants to come and do some volunteering here with some of her colleagues. They might want to do some fundraising in the future too, and whatever the staff raise, the company will match it; last year they gave us over £1,000, which is fantastic. We were also visited by a chap from a charitable trust, who wanted to see the woodwork room and meet the staff. We have applied to his charity for over £30,000, so we're REALLY

hoping he liked what we're doing! We also had a guy in, Kunal, who wants to help us set up a volunteering database, and two chaps based at De Montfort University who have lots of people wanting to do some volunteering. Hmm... I think we might need a bigger house!

Mary and I have been around the County giving talks and presentations to different groups. I met a smashing group of ladies from the Charnwood Ladies Luncheon Club, who gave us a donation, Mary met the Hinckley and Bosworth Rotary Club, and I'm off to see the Loughborough Rotarians soon.

Anne Tester, a reporter for Evington Echo, will also be visiting soon to write an article about Headway House's 20th Anniversary. We're hoping that all these visits will lead to a series of donations dropping through the letterbox in the next few months, but if not, at least people are getting to know more about us and what we do, which is great.

LL&R Headway On the Web

Don't forget to check out our website at www.headwayleicester.org.uk

It has links with other useful organisations. We have a 'forum' so people can stay in touch, ask questions and chat about their interests and experiences. We hope these bulletins are helping to keep you informed about current information. Let us know what you think and all ideas are most welcome!